

“WITHOUT THE WORK OF THE HIGHWAY 55 CORRIDOR COALITION, LONG RANGE CORRIDOR PLANNING WOULD NEVER HAPPEN AND FUNDING FOR CORRIDOR PRESERVATION AND SAFETY IMPROVEMENTS WOULD NOT BE AVAILABLE.”

Marvin Johnson, Mayor
Independence

The Coalition’s Mission

- to secure right of way and related infrastructure improvements to:
- Increase safety
- Add capacity, including additional lanes, access control and transit service where appropriate.

Crash Data

Type of Crash	Number	Loss/Crash	Total Loss
Fatal *	11	\$840,000	\$9,240,000
Incapacitating Injury	18	\$420,000	\$7,560,000
Non-Incapacitating Injury	11	\$138,000	\$16,146,000
Possible Injury	229	\$92,000	\$21,068,000
Property Damage	720	\$12,000	\$8,640,000
Totals	1,095		\$62,654,000

The economic loss in crash costs on Hwy 55 between I-494 in Plymouth through the City of Annandale over the past 5 years (2006 - 2010) was almost **\$63,000,000**. This is based on Mn/DOT’s Office of Investment Management crash values.

City Growth

	1990	2010	Change
Plymouth	50,889	70,576	39%
Medina	3,096	4,892	58%
Loretto	404	650	61%
Corcoran	5,199	5,379	3%
Independence	2,822	3,504	24%
Greenfield	1,450	2,777	92%
Rockford	2,665	4,316	62%
Buffalo	6,856	15,453	125%
Maple Lake	1,394	2,059	48%
Annandale	2,114	3,228	53%

County Growth

	1990	2010	Change
Hennepin	1,032,431	1,152,425	+12%
Wright	68,710	124,700	+81%

Hennepin County is the 34th largest county in the United States. Wright County was the 2nd fastest growing county in Minnesota in the past decade.

PROJECT Spokespersons



Virgil Hawkins, P.E.
Wright County Engineer

Public Works Building
1901 Highway 25 North
Buffalo, MN 55313
virgil.hawkins@co.wright.mn.us
Phone: 763.682.7388 Fax: 763.682.7313



Jim Grube
Hennepin County Engineer

1600 Prairie Drive
Medina, MN 55340

Phone: 612.596.0307 Fax: 763.478.4000

www.highway55.org



WWW.HIGHWAY55.ORG

HIGHWAY 55 CORRIDOR COALITION

Saving Lives, Saving Dollars

February 2013

An Eye On The Future

The Highway 55 Corridor Coalition was formed in 2001 to advocate for increased safety and capacity improvements in the State Highway 55 Corridor from I-494 in Plymouth to the western city limits of Annandale.

Recognizing that the future expansion of Highway 55, including construction of additional lanes, was threatened by encroaching development, Hennepin and Wright counties took the lead in organizing the coalition project. **The goal is to protect the land necessary to expand the highway now, while right-of-way purchase costs are relatively low, in order to hold down the cost of upgrading the corridor in the future.**

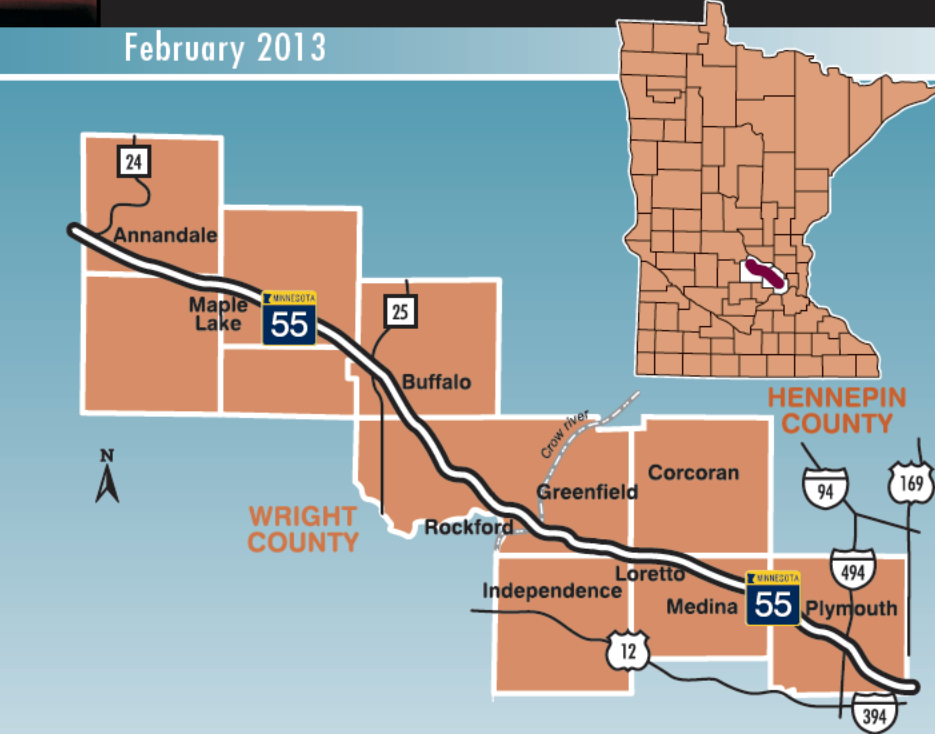
This is an innovative approach to help plan for growth along the increasingly congested Highway 55 Corridor.

The coalition is composed of

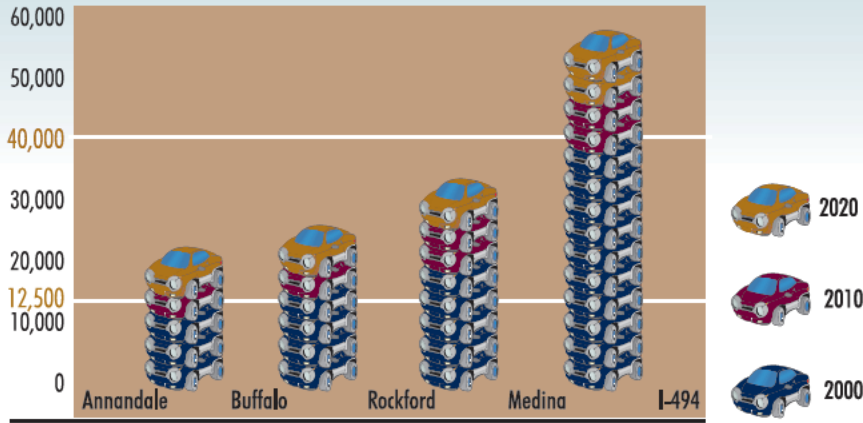
- Counties, cities and townships along the corridor
- Businesses and neighborhood organizations
- Concerned citizens

All working in partnership with the Minnesota Department of Transportation and the Metropolitan Council.

Affiliate memberships were established to provide an opportunity for those directly impacted by the corridor upgrades to participate in the coalition. The coalition is self-sustaining through membership donations.



Highway 55 Corridor Average Daily Traffic Volumes: Annandale to I-494



Traffic Capacities* 2-lane 12,500 4-lane 40,000
*based on level of service D

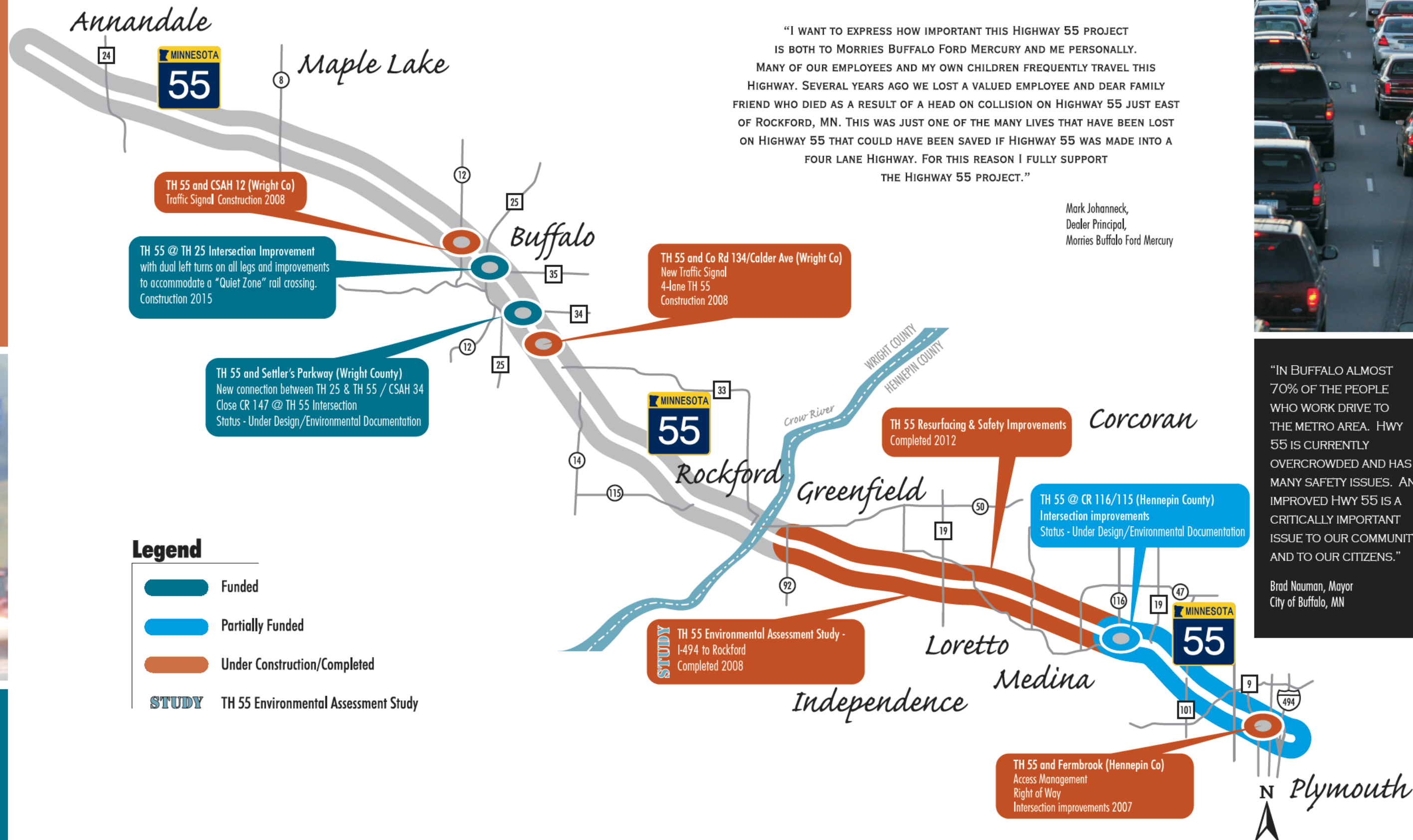
MISSION

- to secure right-of-way and related infrastructure improvements to:
- Increase Safety.
 - Add capacity, including additional lanes, access control and transit service where appropriate.

Pat Hackman
Executive Director
Safe Communities of Wright County



Karen Peters,
Corcoran



Saving Lives, Saving Dollars